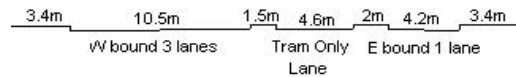


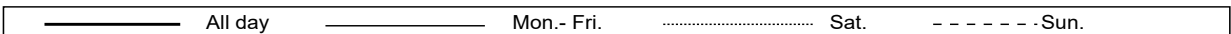
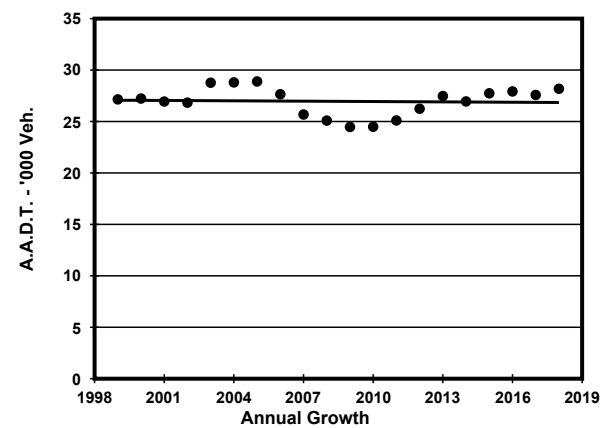
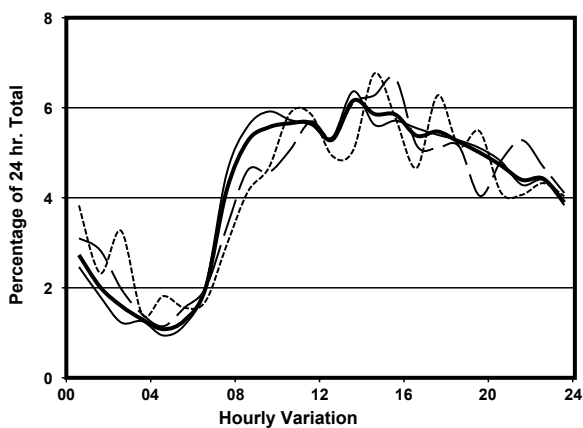
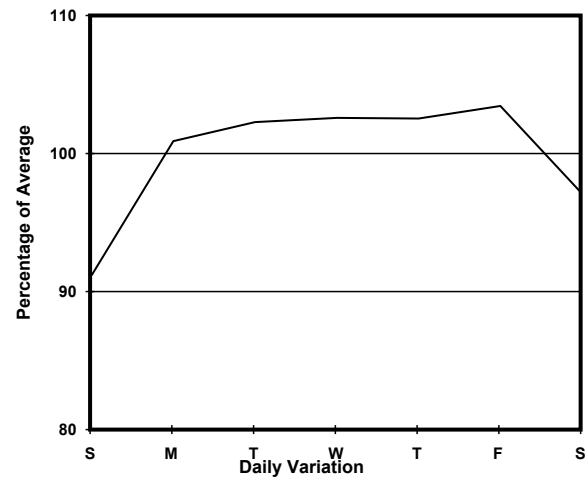
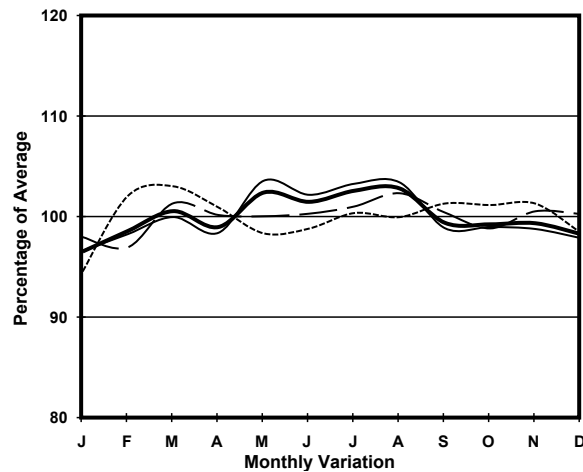
YEAR

2018

LINK KING'S RD (from NORTH POINT RD to TONG SHUI RD)

CORE STATION  
ROAD NETWORK  
ROAD TYPE1008  
MAJOR  
PRIMARY DISTRIBUTOR

## 1. TRAFFIC FLOW VARIATION AND GROWTH



## 2. TRAFFIC CHARACTERISTICS (BY DIRECTION)

Parameter	All - Day	Mon. - Fri.	Sat.	Sun.
<b>EAST BOUND</b>				
A.A.D.T.	4310	4370	4170	4280
R 12 / 24 - %	62.6	63.5	59.5	61
R 16 / 24 - %	83.2	83.8	82.7	80.5
AM Peak Hour	0900-1000	0900-1000	0900-1000	0800-0900
One-way flow at AM peak hour	230	240	240	210
T - % (AM)	-	-	-	-
PM Peak Hour	1600-1700	1600-1700	1800-1900	1800-1900
One-way flow at PM peak hour	230	250	230	230
T - % (PM)	-	-	-	-
Prop.of commercial vehicles - 16 hr.	-	-	-	-
<b>WEST BOUND</b>				
A.A.D.T.	23870	24610	23320	21540
R 12 / 24 - %	66.1	67.2	63.7	62.3
R 16 / 24 - %	84.3	85.5	81.7	80
AM Peak Hour	0900-1000	0900-1000	0800-0900	0900-1000
One-way flow at AM peak hour	1340	1480	1100	1000
T - % (AM)	-	-	-	-
PM Peak Hour	1700-1800	1600-1700	1600-1700	1700-1800
One-way flow at PM peak hour	1310	1350	1250	1400
T - % (PM)	-	-	-	-
Prop.of commercial vehicles - 16 hr.	-	-	-	-

## 3. OTHER INFORMATION AND COMMENT